



ACL DIRECT LINK FOR SAP ERP

"ACL DIRECT LINK PROVIDES A NICE INTERFACE TO SAP, INTERPRETING THE DATA WELL AND LAYING IT OUT IN PLAIN ENGLISH, WHICH MAKES THE RESULTS SO SIMPLE TO UNDERSTAND—EVEN FOR A COMPLETE NOVICE TO SAP SYSTEMS."

JACK TIWARI, CISA, CRISC,
CHIEF AUDIT EXECUTIVE,
EISAI PHARMACEUTICALS

REMOVE THE BARRIERS TO SAP® DATA ACCESS

Accelerate and increase audit coverage with ACL™ Direct Link™

To maximize audit coverage for more complete business assurance, it's important to include all data sources that impact the enterprise. Given the business-critical nature of SAP® applications such as ERP and CRM and the wealth of data within it, it can be considered a gold mine waiting to be uncovered. However, directly accessing this data is no trivial task:

- **IT must often act as the conduit** to provide the required data, which delays the process significantly. Also, there is often miscommunication between the audit team and IT on exactly what data is required, resulting in multiple exchanges of data, which prolongs the process even further.
- **Given that there are thousands of tables in SAP applications** with non-intuitive table names, knowing what data the tables represent and which ones are relevant for analysis is a mind-boggling task.
- **To have meaningful results, a large amount of SAP application data is typically required for analysis**, but extracting this data from the system during office hours impacts application performance and affects other users of the SAP system.

Fortunately, accessing SAP application data doesn't need to be a painful process. Establish autonomy with ACL Direct Link for SAP ERP, an easy-to-use SAP-certified data extraction add-on for ACL™ Analytics and ACL™ Analytics Exchange. This not only reduces the workload for IT, but also empowers the organization to easily include SAP ERP and SAP CRM data in the analysis, leading to more complete auditing coverage and increased business assurance across the enterprise.

Direct, Seamless, Data Access for Audit Independence

Direct Link helps increase productivity by allowing teams to easily and securely access SAP ERP and SAP CRM data for analysis instead of waiting indefinitely for IT and incurring delays due to miscommunication. Since Direct Link is designed to extract large volumes of data for analysis, teams can quickly get what they need in a single extract without wasting time aggregating multiple extractions due to record limitations.

Ensures Data Integrity – Only read-only queries are executed on the SAP system by Direct Link, ensuring that production data will be unaltered.

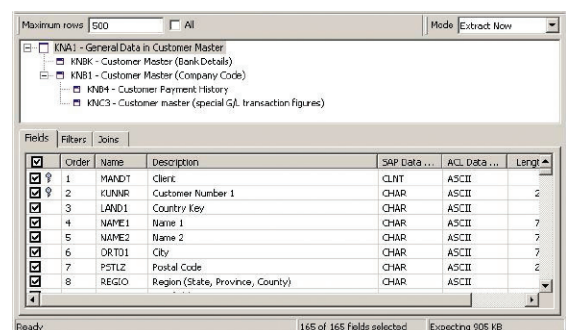
Secure – Direct Link uses SAP security to determine access rights, ensuring that users only have access to the data for which they're authorized.

Easy to Use, Streamlined Data Selection

To avoid confusion with the sheer number of tables in SAP applications, Direct Link provides filtering and viewing capabilities to make it easier to find the relevant data for analysis—a much more efficient approach compared to manual browsing.

Data selection flexibility – Teams can easily find tables of interest with helpful search capabilities in Direct Link that allow searches on field names and field descriptions. Field-level filtering makes it easy to only get relevant data instead of wading through a multitude of tables.

Consolidation – Instead of looking at multiple different tables in isolation, Direct Link can consolidate a variety of tables into a single view for more visibility into business transactions and a more complete enterprise view.



Obtain only the data you need by selecting individual fields.



ABOUT ACL

ACL delivers technology solutions that are transforming audit and risk management to give organizations unprecedented control over their business.

Our integrated family of products—including our cloud-based governance, risk and compliance (GRC) solution and flagship data analytics products—are used at all levels of the enterprise to help maximize growth opportunities by identifying and mitigating risk, protecting profits, and accelerating performance.

Thanks to 25 years of experience and our consultative approach, we implement flawlessly so customers realize concrete business results fast at low risk. Our actively engaged community of more than 14,000 customers around the globe—including 89% of the Fortune 500 and hundreds of governments—tells our story best.

Automation to Maximize Productivity, Minimize System Impact

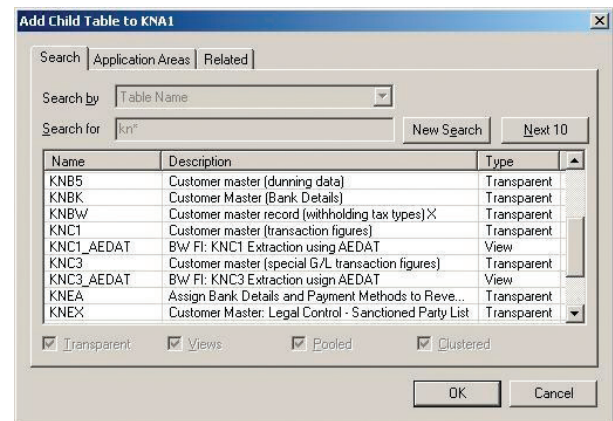
Direct Link helps save time and increase productivity with automation capabilities and also by eliminating the need to define and prepare data after it is extracted.

Analytics-ready data – Application data typically must be manipulated and reformatted in order to be consumable by analysis tools. Direct Link simplifies and streamlines the process by automatically formatting SAP ERP and SAP CRM data for use with ACL Analytics or ACL Analytics Exchange during the retrieval process.

Automated – Routine data retrieval and data analysis procedures can be executed via ACL scripts, thus enabling re-use and repeatability for economies of scale and increased productivity, while allowing more processor-intensive procedures to run off-hours to avoid impacting system performance.

Synergy with ACL™ Audit and Financial Control Solution for SAP ERP

The value from Direct Link can be extended even further when used with the ACL Audit and Financial Control Solution for SAP ERP—a solution for auditing, monitoring, or controlling key financial processes for clients using SAP ERP. The solution leverages best practices from years of experience at customer sites and provides a complete risk and control framework, enablement program, pre-built analysis scripts for auditing or continuous monitoring, pre-built common data models, and consulting services. When used with ACL Analytics, ACL Analytics Exchange and ACL™ GRC (governance, risk and compliance), these combined capabilities provide unparalleled insight into the business transactions underlying SAP ERP processes, enabling the identification and remediation of control breaches, risks, as well as finding opportunities for operational improvements that ultimately lead to cost savings. Talk to an ACL Sales Representative for more information about this value-added offering.



View SAP ERP tables through the Direct Link interface.

Technical Specifications

ACL Direct Link can be used in conjunction within ACL™ Analytics Exchange and/or ACL™ Analytics as an add-on application.

SAP® Certified
Powered by SAP NetWeaver®

**Learn more about what
your organization can
accomplish with ACL**

Call 1-888-669-4225
or email info@acl.com

acl.com | references@acl.com

Supported Operating Systems

- Microsoft Windows® 8
- Microsoft Windows® 7

Supported SAP Systems

- All SAP ERP versions and Enhancement Packages, SAP CRM

Client System Requirements

- SAP GUI version 7.3 Patch Level 5 or higher
- ACL™ Analytics or ACL™ Analytics Exchange